

Effectivity: Incorporation of security items on the L 13 canopy hinges on sailplanes P/N 172601 through 172826, provided with the canopy jettisoning system.

Reason: To avoid danger of the towing cable being caught by canopy hinges.

Description: Installation of protective items over the canopy hinges.

Latest date of incorporation: Immediately after the bulletin and necessary materials have been obtained.

To be carried-out by: The Operator.

Costs covered by: The Manufacturer.

Supplier of material: The Manufacturer.

For material information and accomplishment instructions refer to sheet Nos. 2,3 which are part of the Bulletin.

Appendices: 2 sheets of illustrations

Date of validity: 9 February 1964

Manufacturer's  
representative:

Ing. Černocký

Foreign Trade  
Corporation:

Langová

Customer's  
representative:

Ing. Boron

State Aviation  
Inspection:

Kadleček

Material Information

Item	Qty	Description	Dwg.No.	Material	Size	Note
1.	2	Hinge protective cable	L13.105-03.17	12020.1	dia.5, l=140	it.7
2.	1	Hinge protective cable	L 12.105-03.20	12020.1	" , l=90	it.10
3.	4	Screw	M4x25 CSN 021151			it.8
4.	4	Nut	M4 LDN 3235.1			it.9
5.	1	Copper wire	No Dwg.	423001.1	dia.5, l=150	
6.	1	Seal dia.8	"	Plastic material		
7.	1	Lockwire	"	11341.1	dia.8, l=100 galvanized	

Accomplishment Instructions

1. Remove the lockwire at the centre pin of canopy hinge preventing its release from the hinges, remove the washer and slide the canopy forward out of the hinges. Store away from the sailplane.
2. As shown on Figure 1 remove the seal securing lever item 1 and unscrew the screws items 3 and 6 together with nuts as well as the nuts and washers of the screw item 2.

Carefully remove the front and the rear covers items 4 and 5 to avoid damage to the canopy glazing and rotating of the lever item 1 forward. Shorten the distance tubes for 1.5mm which were put on the screws item 3 /between canopy frame and items 4 and 5/. Enlarge the holes of these screws item 6 using a drill of 4.2 mm diameter.

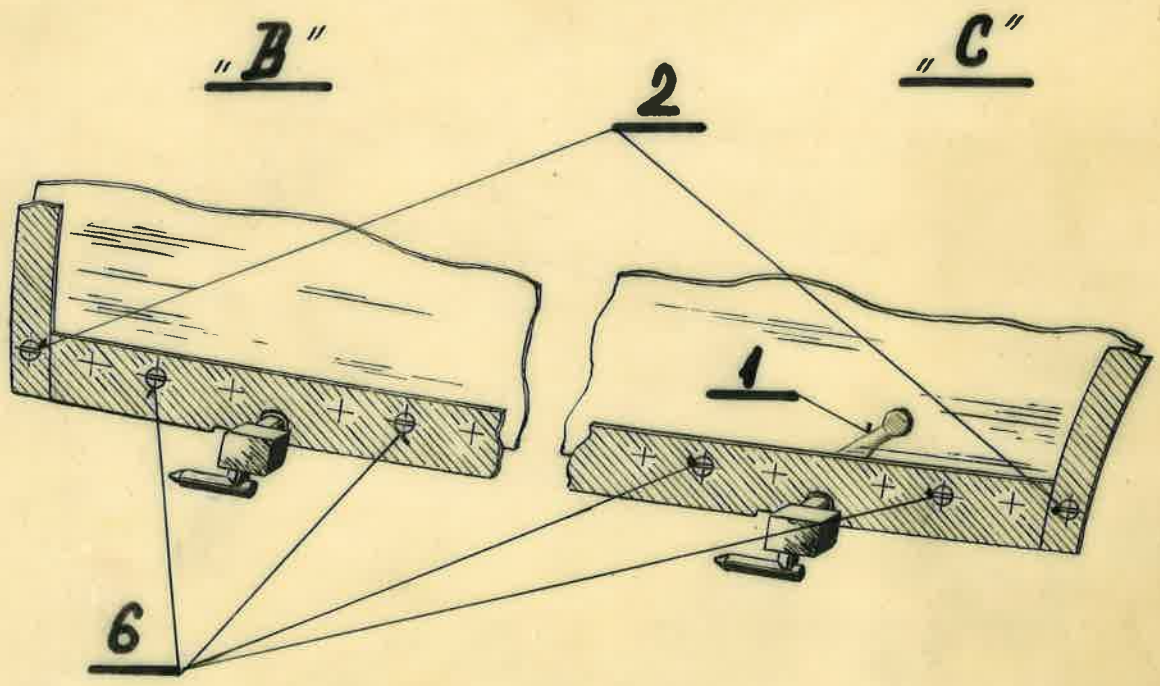
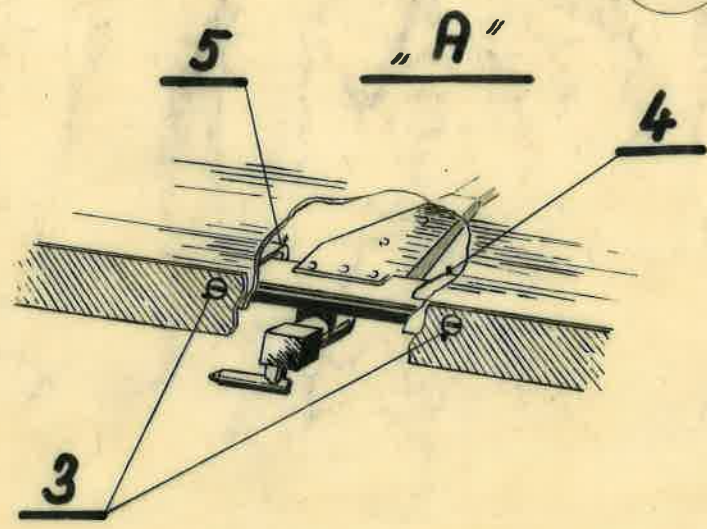
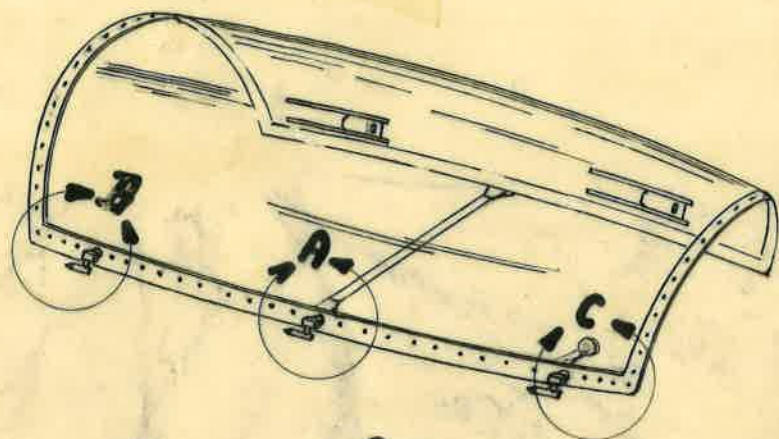
Continued..

3. As shown on Figure 2, Detail view "B", install protective cables over hinges item 7 on the canopy frame, using the screws M4x25 CSN 02.1151 /item 8/ and the nuts M4 LDN 3235.1 /item 9/, supplied by the Manufacturer.

/Protective cables must fit to the heads of the canopy hinges or else they must be properly fitted/. As shown on detail view "A", install the protective cable over the centre hinge using original screws item 3 and put the shortened distance tubes on these screws from inside the cockpit. Install the covers item 4 and 5 in their original places, reinstall washers to item 3 and screw the original nut on.

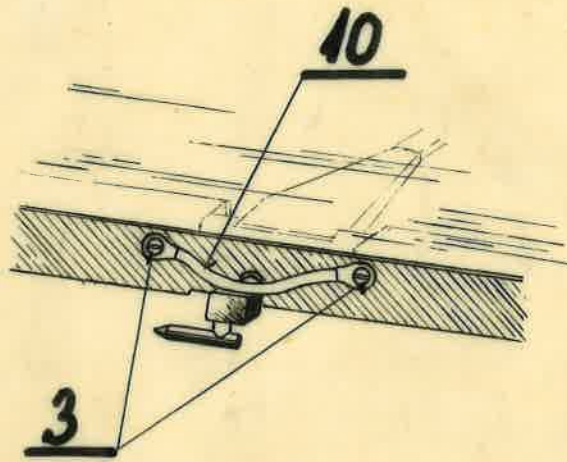
4. Seal the lever item 1 by a newly supplied seal provided with a copper lockwire.
5. Reinstall the canopy into the hinges on sailplane and secure against sliding by washer and a lockwire on the centre hinge pin as before.

1



2

"A"



"B"

8  
9

"C"

