



LET národní podnik KUNOVICE

OPERATING BULLETIN No. L 13/025

Page No.: 1

Pages : 4

**Re:** Inspection and eventual replacement of control rods eyes on the sailplane L 13 - from the 1st series up to the 14th sailplane of the 34th series.

**Reason:** Danger of the eye breakage due to sharp edge recess made on it.

**Measures to be taken:**

Inspection - immediately after the Bulletin had been received. In case of any defect secured on the component - ask the Manufacturer to supply new eyes for replacement.

**To be carried-out:** Immediately!  
by: The Operator.

**Expenses covered by:** The Manufacturer - material.  
The Operator - labour.

**Material to be supplied by:** The Manufacturer.

**List of necessary material and Procedure of work -** See Sheet No. 2

**Appendices:** 2 copies of drawings.

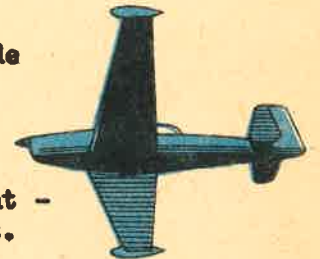
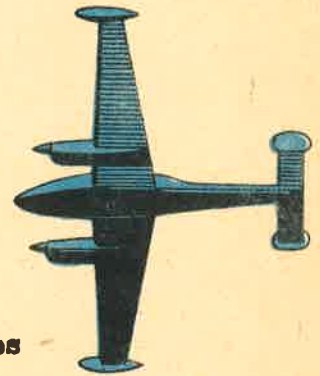
**The Bulletin is valid as from:** After it has been received by the Operator.

Čáslavský  
Manufacturer's  
Representative

Ing. Háva  
Omnipol  
Foreign Trade  
Corporation

Šafařík  
Customer's  
Representative

Ing. Moucha  
State Aviation  
Agency



23.1.1967

List of material to be used for modification:

<u>Item No.</u>	<u>Pos.</u>	<u>Title</u>	<u>Dwg. No.</u>	<u>Note</u>
1.	4	Lock washer	8 ČSN 313288	pos. 5
2.	4	Cotter pin	1,6x15 ČSN 021781.02	
3.	x/	Eye	SK-L13-138	x/ Number of eyes is to be reported by the Operator.

Procedure of work:

Remove the frame and the floor fabric cover of the front control stick (See pos. 1). Check the eye of connecting control rod (pos. 2), if the radii of recess on the eye corresponds to the radii R1, shown in detail on Figure "D". The same procedure is to be followed with the interceptor control rod in fuselage (pos. 3), and wings - near the rib No. 15 (See Figure 2, view "A", pos. 4).

Report to the Technical Service Dept. of the Manufacturer that will supply new eyes for replacement free of charge, if any of the radii is smaller than R1. Inspection and replacement may be carried-out by a semi-skilled worker of the Operator.

Total time required: approx. 3,30 h including:

Inspection: 1,40 h

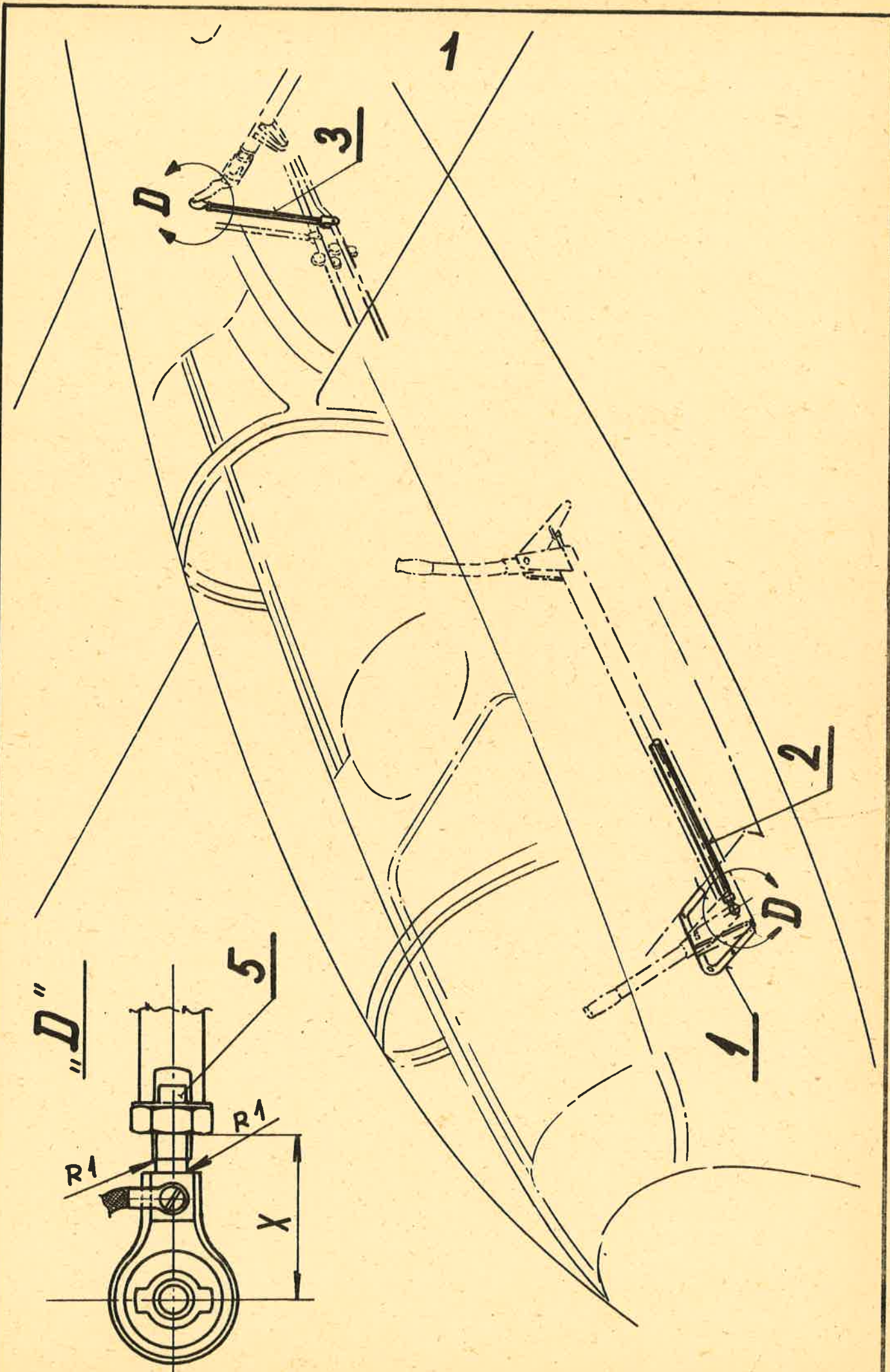
Replacement: 1,50 h

If the eye is screwed to the stop so that the nut covers the recess, it is to be unscrewed from the rod and properly checked (partial eye turning might be sufficient for inspection, but with regard to the lock washer pos.5, Fig. 1, detail "D" which cannot be re-used, it is necessary to remove the eye completely).

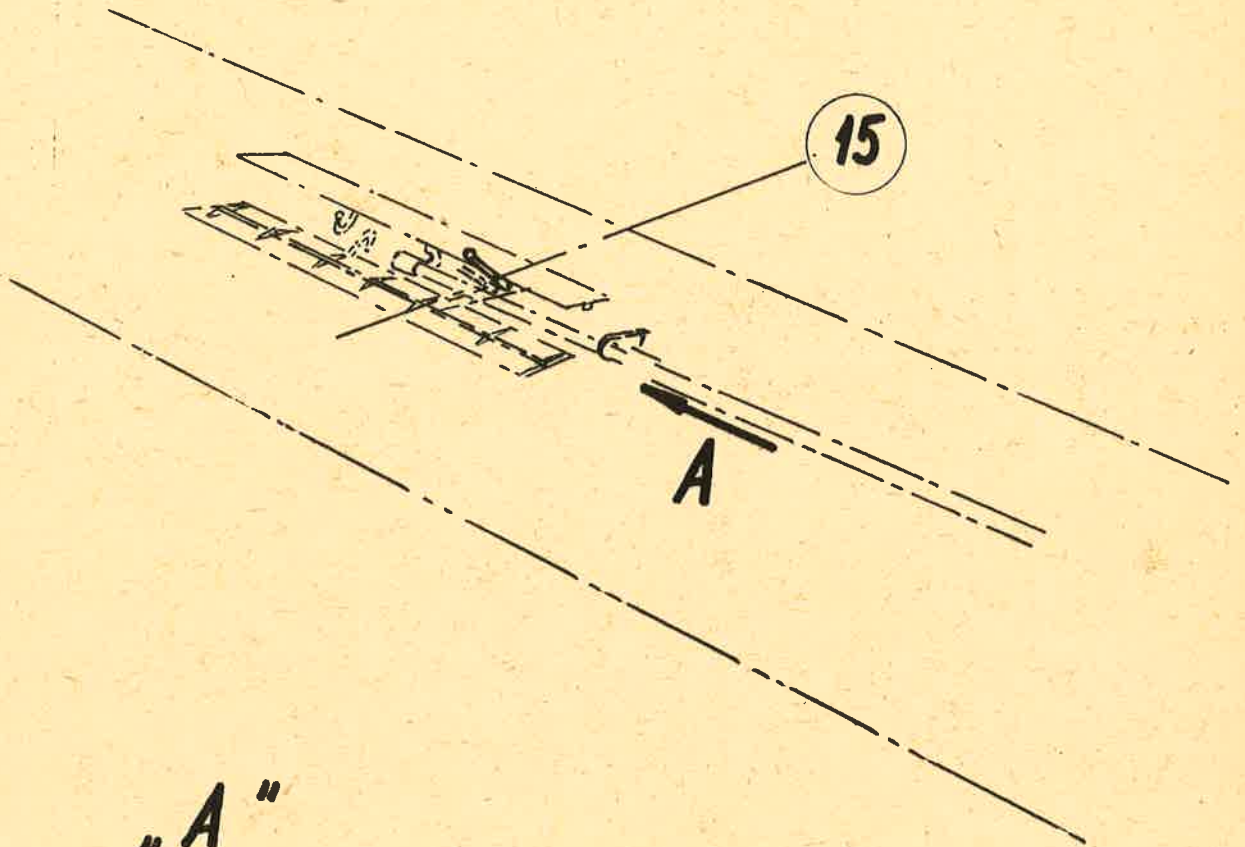
Note: In order to avoid re-setting of control rods due to the inspection and replacement of eyes, it is recommended to measure the distance X, shown on the Fig.1, detail "D", and then screw and safeguard the replaced eyes accordingly.

The Manufacturer will supply new cotter pins for belts and lock washers that are to be used for safeguarding nuts on rod eyes.





2



"A"

