



OMNIPOL PRAHA ČESKOSLOVENSKO

SERVICE BULLETIN No. L13/039

Sheet No.: 1
No. of sheets: 5

Application: L13 Sailplanes provided with the bottom "Europa G73" hinge attachment.

Reason: Limitations on the operating time, prescribed by manufacturer.

Description: After 2000 landings or in three years time since installed the bottom hinge attachment must be removed and shipped to the "RICHARD TOST, 8 MÜNCHEN 2, THALKIRCHNER STRASSE 62" for general overhaul and testing.

Compliance: Refer to Description above.

Carried-out by: The Operator

Material - cost and Availability:
Material required to accomplish this bulletin will be supplied by the Omnipol, FITC, Washingtonova 11, Prague, Czechoslovakia with any costs incurred covered by the operator.

Bulletin effectivity:

Starting from the day of receipt by an Operator.

Manufacturer's Representative

Čáslavský

State Aviation Inspection

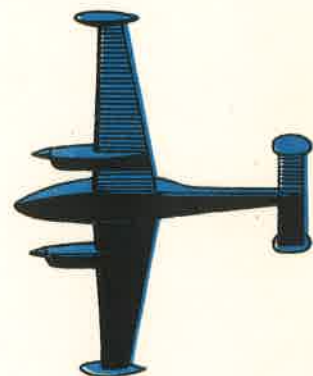
Kadleček

Customer's Representative

Ing. Lukas

Ministry of Foreign Trade

Ing. Bona



LET n. p., UH. HRADIŠTĚ - KUNOVICE

ACCOMPLISHMENT INSTRUCTIONS

I. Disassembly procedure

- install the fuselage in a stand to be supported at the frame Nos. 3 and 14,
- remove the rear seat,
- release the sealing covers at the rear control stick as well as at the landing gear control handle /see Figure 1, items 1 and 25/,
- disconnect the cable clamps /item 2/ at the wheel brake /see Figure 1/,
- disassemble the axle of the wheel /item 3/ and remove the wheel,
- knock out the pin /item 4/ and pull out the pin /item 5/; be careful so as to prevent a damage to the shock absorber strut cover by a cut-out edge in floor,
- remove the bolt item 7 on the fork of the bottom hinge mount and disassemble the cross member item 8 together with a cable /see Figure 2, Section A-A/,
- disconnect the push-pull rod item 9 through removing the bolt item 10 /see Figure No. 1/,
- remove 4 bolts item 11 at the landing gear shock absorber fork. Thrust the fork axis item 13 along "X" direction and pull out the lever item 12 through a cut out in floor. Then take out the axis item 13 along "Y". Pull the released shock absorber fork upwards,
- remove 3 bolts item 14 /see Figure 2/ and 7 bolts item 15. Reinstall the reinforcing item 26 during subsequent assembly,
- insert the hinge mount 16 into the bracket item 17 and remove both upwards.

II. Assembly procedure

Assembly to be carried out in a reverse procedure. New connecting items are recommended to be used for items Nos. 20, 21, 22 and 23. The pin item 22 to be secured by 3 dots from above.

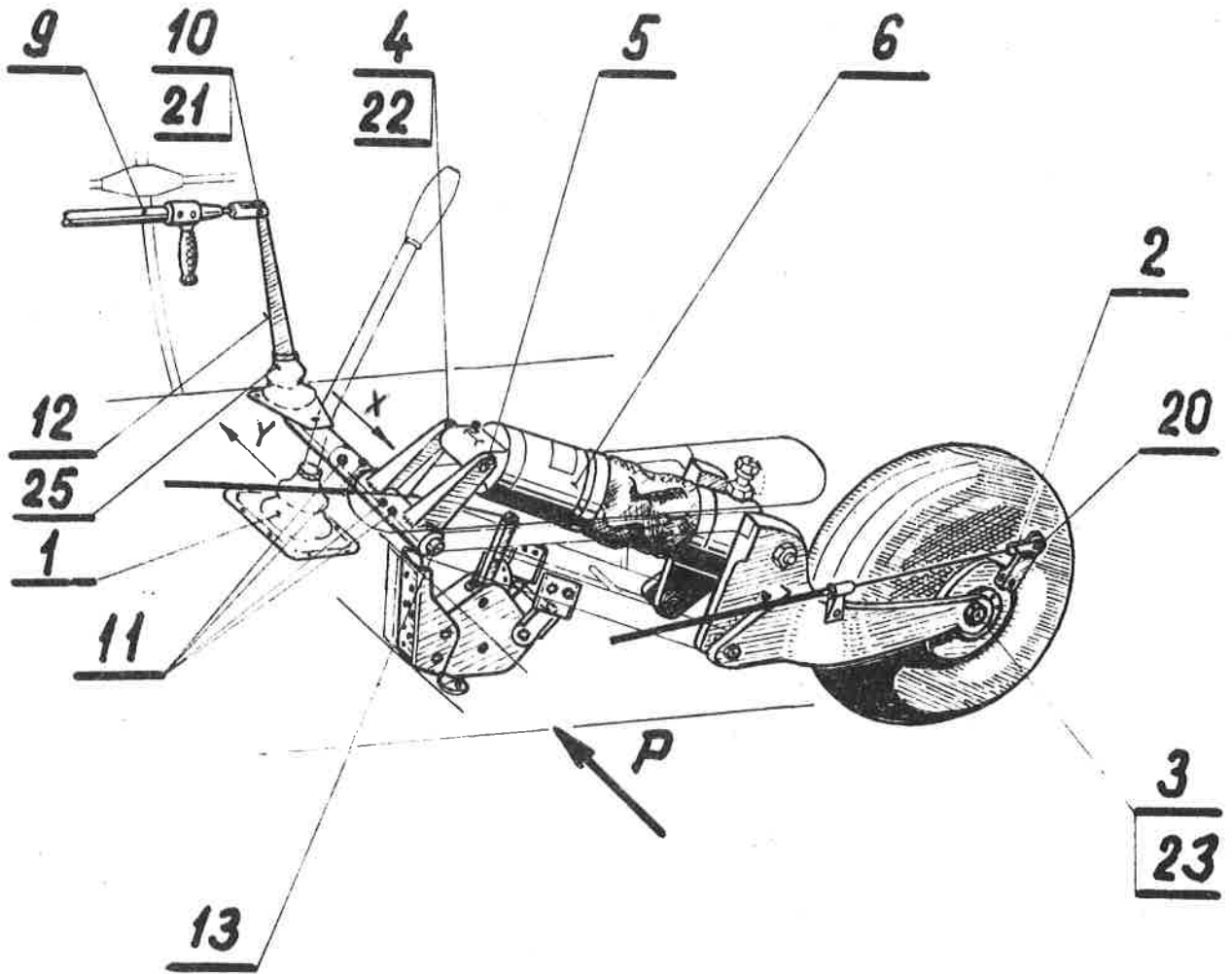
III. Functional check

Perform a functional check of the bottom hinge mount. In open position the distance "L" is to equal to 0.5 mm.

IV. Material information

Item No.	Qty	Nomenclature	Dwg./Stand./ No.	Remark
1	1	Cotter pin	1.6x12 CSN 021781.09-K	Item 20
2	1	Cotter pin	1x8 CSN 021781.09-K	Item 21
3	1	Pin	3x25 CSN 022150.1	Item 22
4	1	Lock washer	L13.501-15.11	Item 23

1.

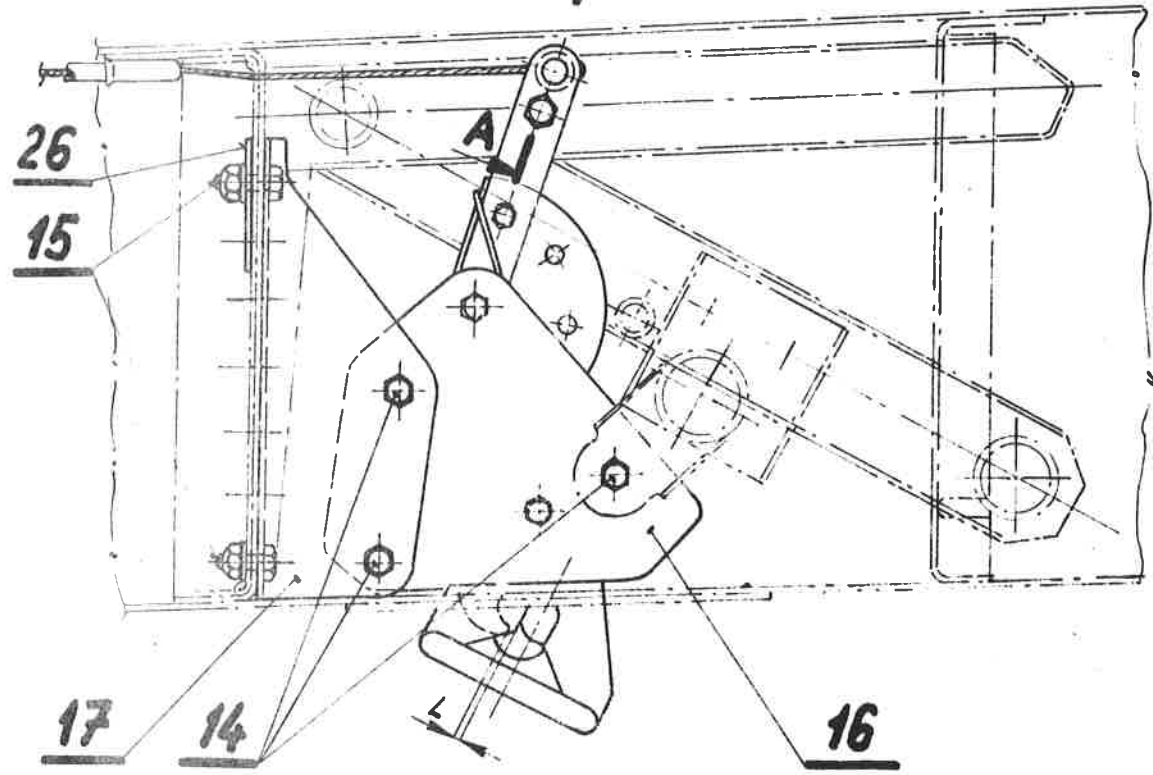


L13/039	Vypracoval <i>gany</i>	Kontroloval <i>P. K.</i>	Schválil	List: 4
				Ličeb: 5

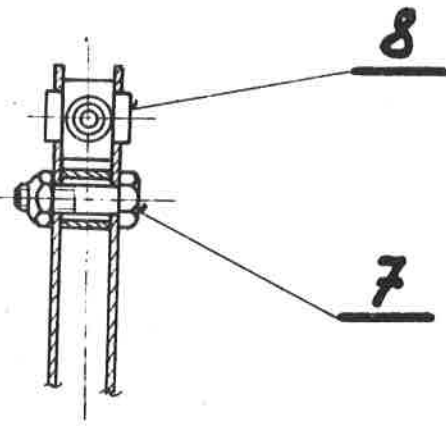
2.

"P"

A7



"A-A"



L13/039	Vypracoval <i>Jan</i>	Kontroloval	Schválil	List: 5 Listů: 5
---------	--------------------------	-------------	----------	---------------------